

July/August 2026

parish news

Wallberton, Binsted & Fontwell
in this month's edition:

- o New Bank Notes
- o 100 Years Ago
- o Summer Events



Printed for the community by St Mary's church

£1.20

World Cup 2026

Could the players left behind by England manager Thomas Tuchel have won the World Cup?

It is a sign of the strength of English football that the following were left behind:

- Nick Pope
- Trent Alexander-Arnold, Harry Maguire, Levi Colwill, Lewis Hall,
- Adam Wharton, Myles Lewis-Skelly,
- Cole Palmer, Morgan Gibbs-White, Phil Foden
- Dominic Calvert-Lewin

**Estimated value of team:
£455 million**

Tim Ward



Wednesday Afternoon Club – 15th July

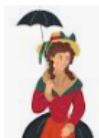


Join us in the small room at the back of Walberton village hall at 2.00pm for a chat “My favourite decade” and “If you could time travel,

what era would you visit and why”



Only £2 to cover refreshments.
Guests always welcome.



For more information contact Ann Wells on 01243 555893

NOTE: THERE IS NO MEETING DURING AUGUST



Our home is your home

Our nursing home is run in a compassionate manner, ensuring that every person staying at Barnham Manor is treated with dignity and respect. We aim to be a home from home; where every person can feel that they are part of the Barnham Manor family.

- Nursing, Residential and Respite Care
- High quality, comfortable en-suite rooms
- High Care Standards
- Friendly and experienced staff
- Beautiful landscaped garden
- Tailored activities programme
- Peaceful and calm environment
- Minibus trips
- Delicious and nutritious home-cooked food



If you have any questions then please contact us and we will be happy to talk to you about our nursing home and invite you to visit us.

01243 551190 | enquiries@barnhammanor.co.uk | www.barnhammanor.co.uk
Barnham Manor, 150 Barnham Road, Bognor Regis, PO22 0EH

WHERE CAN I FIND?....	Page	Page
B&B		
Woodacre	53	
Beauty Therapy		
Reflexions	55	
Builders / Property Maintenance		
ClearEdge Exteriors	18	
Insideout	51	
Warren Vaughan	62	
Martin Sewell	62	
SDL	63	
Cleaning		
We Clean Ovens	18	
Community		
Village Friends	56	
Computing / Telecoms		
Ridea Technology	12	
Education		
Cpaw	63	
Slindon College	50	
Electrical		
Phillips Electrical	31	
Estate Agents		
Sims Williams	64	
Funeral Services		
Oaklands	57	
Reynolds	58	
Gardening		
PRH Garden Services	55	
S A Apps	12	
Health Care		
Elaine Sturgess	54	
Home Care		
Julie Day	12	
House and Home		
Aerial Man	62	
Legal Services		
GWCA	48	
Logs / Tree Surgery		
Pro-forest	12	
DM Chainsaws	56	
Ashwood Tree Surgery	57	
KW Tree Care	58	
KIWI Tree and Hedge Services	55	
Motoring		
S&G Motor Centre	51	
Pet Care		
Moggy Minders	31	
Plumbing		
R G Banks	31	
Ellis & Co	56	
Residential Care		
Barnham Manor	3	
Walberton Place Care Home	41	
Retail		
Walberton News	54	
Seamstress		
Sandra Cooke	31	
Swimming School		
Seahorse Swim School	18	
Taxi Service		
Helen's Taxis	53	
Community Transport	51	

IN THIS MONTH'S PARISH NEWS

WWW.STMARYSWALBERTON.ORG.UK

COVER PICTURE: LAVENDER IN WALBERTON - ANDY HARRIS

Page	Article
2	World Cup 2026; Wednesday Afternoon Club
6	Services at St Mary's Church
7	Letter from the Vicar
8	Interested in Local History?
9	St Mary's Harvest Supper
10-11	Walberton Baptist Church
13	Walberton Summer Flower Show
14-15	Walberton Gardeners Club
16	Mothers' Union
17	Summer Bride
19	Walberton Youth Theatre Workshops
20-21	Walberton Village Hall; Walberton Neighbourhood Watch
22	Diary Page; Community Minibus Service; Sainsbury's bus
23	Noticeboard
24-25	The Binsted Bugle
26	Volunteers Needed; How Can We Help?;
	Trivia Q. of the Month;
27	Downland Art Society; Flower Rota
28	Hartbeeps comes to Walberton Village Hall
29	No Quibble guarantee
30	Chantry Quire Concert
32-33	Books You May Enjoy;
34	Robin Cousins event
35	New Bank Note Range For British Wildlife
36	Flower Arranging Class and Afternoon Tea
37	Bags of Education
38-39	Parish Council News; Our Post Box Revisited
40	Snowdrop Trust Event
42-43	Prayer Diary for July August
44-45	Children's Pages
46-47	Newspaper Extracts from 100 years ago
49	Old Newspaper Research
52	Celebrating 50 Remarkable Years of Service
56	Trivia Q. of the Month (Answer)
59	Deadline for September issue is Monday 10 th of August
60	Contacts

ST MARY'S WALBERTON WITH BINSTED

SERVICES IN CHURCH AT ST MARY'S

Sunday 5 July Trinity 5

9.00am Binsted Holy Communion BCP
 10.30am Holy Communion CW
 5.00pm Families at Five

Sunday 12 July Trinity 6

9.00am Holy Communion CW
 10.30am Morning Worship with children's groups
 6.00pm Evening Prayer BCP

Sunday 19 July Trinity 7

9.00am Mattins BCP
 10.30am Holy Communion CW with children's groups
 6.00pm Holy Communion CW

Sunday 26 July Trinity 8

9.00am Holy Communion BCP
 10.30am I sing Morning Praise

Sunday 2 August Trinity 9

9.00am Binsted Holy Communion BCP
 10.30am Holy Communion CW
 6.00pm Evening Prayer BCP

Sunday 9 August Trinity 10

9.00am Holy Communion CW
 10.30am Morning Praise

Sunday 16 August Trinity 11

10.30am Holy Communion CW
 6.00pm Evening Prayer BCP

Sunday 23 August Trinity 12

9.00am Holy Communion BCP
 10.30am I sing Morning Praise CW

Sunday 30 August Trinity 13

10.30am Holy Communion CW
 6.00pm Evening Prayer BCP

CW = Common Worship
 BCP = Book of Common Prayer 1662



LETTER FROM THE VICAR

All Change

When I came to Walberton Tony Blair was prime minister and he served for ten years. Since 2007 no less than seven prime ministers have followed him and the present incumbent is shortly to depart. There are wild swings in the polls. The government with its massive majority has lost nearly half its supporters in the country. Every prime minister vies for the title of most unpopular. There is an underlying dissatisfaction driving this turmoil. I believe that the fundamental problem is that we no longer have a story to tell about ourselves as a society. The story which began with Bede's History of the English People in the early 8th Century has been discarded. We live in Tony Blair's New Britain where the past is left to antiquarians rather than being a living source of inspiration.

Sir Keir Starmer had been a successful human rights lawyer and bureaucrat. But this did not give him a story to tell or a vision to cast about what the good life is. Human rights do not describe the good life; they are preconditions for the pursuit of the good life. They don't tell you where to live or whether to marry and have children. They don't tell you whether to eat meat or drink wine. They don't tell you how much to give away or who to befriend and, of course, they don't tell you which faith to follow if any at all. They are a necessary but insufficient basis for a happy society.

'I urge, then, first of all, that petitions, prayers, intercession and thanksgiving be made for all people—for kings and all those in authority, that we may live peaceful and quiet lives in all godliness and holiness.' (1 Timothy 2) Let's hope that the next likely incumbent with his background in Catholic Christianity can show us who we are.



Rev Tim Ward, Vicar

If you are aged 2-7 years old or 8-14 years old join us for Sunday school **10.30am at St Mary's Church on the 2nd and 3rd Sundays of July.** Craft, drama, stories and more.

Please contact **Sandra Cooke or Sue Harris (01243-544077)**

ORGANISATIONS OFFERING HELP

Mothers' Union	01243 552292	Mary Lewis
Village Friends	07925 217843	Meg Brackley
Wednesday Afternoon Club	01243 555893	Ann Wells
Parish Clerk	01243 554528	Shona Turner
St Mary's Church Office	01243 552792	Ali Stacker

INTERESTED IN LOCAL HISTORY?

If so don't miss out on these events

Saturday 4th July as part of the Walberton Gardeners Club Summer Flower Show/Dog Show & Village Fete, your Walberton Local History Group will once again be displaying items of local interest. Come along, say hello.



Saturday 11th July



Yapton & Ford Local History Group have a display in the Club Room entitled "A LOOK BACK IN TIME", this is in conjunction with their Summer Fair. 12pm – 5pm.

Saturday 1st August WESSEX ARCHAEOLOGY EXHIBITION

Join specialists for Wessex Archaeology to learn about the amazing discoveries from Church lane, Clymping. Speakers will present on the finds, the flints and their interpretation of what they tell us about life in Sussex 2000 years ago and beyond. TICKET EVENT ONLY. Tickets will be free (being paid for by the building developer Foreman Homes), but you will need a ticket to access. Check via <https://www.eventbrite.co.uk/d/united-kingdom-yapton/events/> nearer the time.

Saturday 15th August A CELEBRATION OF LOCAL HISTORY



12pm – 5pm Yapton & Ford Village Hall

The Walberton History Group will be participating in Yapton & Ford's celebration of local history. At least 7 local history groups will be attending. Come along to appreciate their research work over the years and find out more about the wider Arun area.



St Mary's Harvest Supper

Walberton Village Hall

Saturday 26 September, 6.30-9.00pm

Jacket potato supper, bring and share desserts, home spun entertainment (BYO drinks)

Adults: £6 Under 18s: £3

Tickets available from the Church Office, William Booker Yard (01243 552792)

To contribute to the entertainment please contact Julie Allday (01243 544615)

WALBERTON BAPTIST CHURCH

July and August 2026

July - 5th, 12th, 19th and 26th (Aug) 2nd, 9th, 16th, 23rd and 30th All at 10.30am.



Open-Air Service on the green - 12th July and 9th August both at 4.30pm (weather permitting)

The Thief comes to Steal and Destroy

If you are anything like me, you probably have days when there seems to be more things to do than there is time in which to do them. Appointments, meetings, weekly shopping, collecting children from school – the tasks can seem endless. I find the best thing to do is to make a list and cross off each item as it is accomplished. Of course, more gets added to the list as inevitably matters crop up that I hadn't anticipated but at least it gives me the satisfaction of knowing that some progress is being made, even if it's rather slow. I've also come to realise that when one problem is solved, another quickly rises to take its place.

Speaking of unexpected events, my wife and I experienced one recently when we were doing our weekly shopping at Tesco. On previous occasions I had noticed signs cautioning customers to beware of the seagulls but didn't give much attention to these although the birds could be seen perched on car roofs surveying "their" territory! Having completed the usual formalities at the check-out, we made our way out of the building and into the car park. We had only gone a few yards when I felt this sudden rush of wind past my right ear and to our total surprise, we saw our pack of prawns snatched from our trolley and in the mouth of the predator! I tried to give chase but within seconds the seagull had ripped the package open rendering the contents unfit for human consumption. After securing the rest of our purchases, I went back to the scene of the crime only to find the empty container and the triumphant attacker standing by its prize. What amazed me the most was the speed and accuracy with which this bird operated.

It had only seconds to identify and perpetrate its theft, but it did so with great precision. Unfortunately for us, the prawns just happened to be on the top of one of our bags and that bird knew exactly what it wanted. Incidentally, other birds tried to share the spoils but were forcibly prevented from doing so. A member of staff returning from their break witnessed what happened and reported the incident. I believe this has resulted in increased security with netting on the roof of the building to remove this launching pad. I don't like prawns but in case you're wondering, by wife popped back in and bought another pack so didn't miss out after all. We now cover our shopping up, just in case!

On reflection, this probably seems quite an amusing incident, but it has made me realise how important it is to be on our guard against those things which could be harmful to us, our families or friends. The apostle Peter when writing to Jewish believers in his first letter chapter 5 and verse 8 says, **"Be sober, be vigilant because your adversary the devil walks about like a roaring lion, seeking whom he may devour."**

Now in our modern so called sophisticated society people may laugh at the idea of a spiritual entity out to do them harm, but I can assure you he is as real as you and I and we see the results of his activity displayed around us every day of our lives. We may not like to talk about him, but it is necessary that we are aware of what he is capable of. He appears throughout Scripture and has a number of different names. His activity becomes clearer in the New Testament notably when Jesus confronted him in the wilderness for forty days and went on to defeat him in the lives of many people whom he held captive. The ultimate victory was on the cross of Calvary when Jesus destroyed his power by rising from the dead as described in Hebrews 2 v 14, **"Inasmuch then as the children have partaken of flesh and blood, He Himself likewise shared in the same, that through death he might destroy him who had the power of death, that is, the devil, and release those who through fear of death were all their lifetime subject to bondage."**

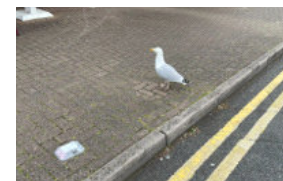
This is the whole mission of the Church. We are all involved in a spiritual battle and the Lord's objective is to move people from the kingdom of darkness, in which we were all born, into the Kingdom of God's Beloved Son. We make that transition when we repent of our sin and put our faith in Jesus Christ. You may not attend a place of worship, but you are still part of this battle which is going on continuously until God calls time and the opportunity to receive His help will have passed. The title of this article comes from John's Gospel chapter 10 where Jesus goes on to explain that He has come that we might have life and have it more abundantly. Don't let our enemy steal away what God has provided for you. Put your faith in Jesus today and secure your eternal future.

Pastor Ray

Thief



Spoils



Empty!





PRO-FOREST
Suppliers since 1997 of
Seasoned logs, sawn & machined timber
and fencing. Tree felling and woodland
management.



All our timber has been felled, processed (and trees replanted) by ourselves, working entirely in local woodlands.

Please contact Andrew M Cossar B.Sc on
07767 607524



RIDEA Technology
www.ridea.co.uk

Need help with your technology?
For sourcing of or assistance with
your Computer, Tablet, Internet, &
home Audio/Visual equipment

Tel: 01243 216121 / 07970 291302
E-mail: help@ridea.co.uk



S.A. Apps
Garden Services



For a professional
Service covering -
turfing : planting : hedge trimming :
tree and shrub pruning : clearance work :
grass cutting : fencing :
general garden maintenance
For all your garden requirements
Tel. 07533 499601

HELPED BY JULIE
Home Help

I offer Personal Care, Help with
Medication, Meal Preparation, Companionship



I AM A COMPASSIONATE EMPATHETIC PROFESSIONAL INDIVIDUALE

DBS CHECKED INSURANCE	REFERENCES ON REQUEST CONTACT JULIE 07812498250 JUUDAY@HOTMAIL.CO.UK
--------------------------	--



Summer Flower Show Dog Show & Village Fete

Saturday 4th July 2026

**Walberton Village Hall &
Playing Field 1.30 - 4.30**

Entrance £2.00 cash only

Dog Show Registration from 1.30
First Class 2pm
£2.00 per class

**In Aid of
Clymping Dog Sanctuary**

WALBERTON GARDENERS CLUB

The results of Walberton Open Garden held on Sunday 21st June and the Summer Flower Show, Dog Show and Village Fete will be appear in the September Parish News.

Saturday 4th July Summer Flower Show

Hopefully by the time you received this, your entries will be in for the Summer Flower Show. There is a choice of 123 classes to enter ranging from cut flowers, pot plants, floral art, vegetables, fruit, cookery, handicraft, art, photography, and children's classes. Non members are very welcome to enter and details can be found on the website. www.walberton-gardeners.com

Pop in for tea and homemade cake. Tombola and plant sale.

Fun Dog Show

Registration starts at 1.30pm. New classes this year including Fancy Dress. The Clymping Dog Sanctuary will be the recipients of any funds raised from this years Dog Show so we are hoping for a bumper turn out.

If you love dogs, do come along and watch. Plenty of chairs available around the arena.

Village Fete

This year we have booked the Pavilion to accommodate some of the Fete stalls, so don't forget to visit them. You may find something you haven't seen since your childhood. All the old favourites and of course lots of local charities so please try to support them.

£2.00 Entry buys you a program of events, to the Flower Show, Dog Show and Village Fete, so come along and enjoy a fun afternoon.

There is still time to volunteer your help. Just a couple of hours would be much appreciated by the Gardeners Club Committee. If you can help contact Brenda Bailey 07881 552980

Friday 21st August Afternoon Cream Tea Village Hall 3.00pm

The annual Cream Tea, sandwiches, scones with jam and cream, homemade cakes. This is free to members and £5.00 to guests. We will present a cheque to The Clymping Dog Sanctuary with the proceeds from the Fun Dog Show.

Please give you name to Brenda Bailey if you would like to reserve a place.

Saturday 19th September Autumn Flower Show Village Hall

A choice of 129 classes to enter. All the usual as in the Summer Show, but don't forget the Technical Challenge in the Cookery Classes and the always popular Novelty Section, in the flower, fruit and vegetable sections. Not to early to save your longest Runner Beans for Runner Bean Race.

Don't work too hard in your garden. Take time to sit and enjoy your surroundings.

Enjoy the summer. **Liz Hewson**

(Here are some wonderful pictures of gardens that were open for our Open Gardens Sunday earlier this summer.)



What do Mothers' Union do all year?

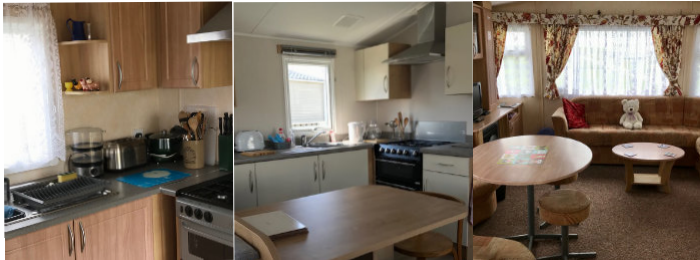
The members of the many branches of MU throughout the Diocese of Chichester are all involved with supporting families. We do this in many different ways, but all with the common goal of making life better for others as we try to follow Jesus in practical ways.

One major project is the Away From It All holidays that are offered in the caravans, owned by MU. Families are referred by Social Workers, and parishes and a large number always come from the Diocesan Association for Family Support Work, (FSW). Last year 2025, 12 families had a free holiday in Winchelsea and 14 in Selsey. Here are some of the comments from the visitors' books:



"Thank you so much for this get away. Me and my son's first holiday together. So was amazing."

"The caravan is lovely with so much thought put in with each touch – lego, films, games, buckets and spades. We had everything needed."



School holidays are all filled already, but other people can stay in the caravans during term time, for a very moderate fee. The caravans have running costs of around £19,500 per year and a reserve fund is being built up to replace them when they come to the end of their working lives. If you are interested in having a caravan holiday contact Andy Anderson, afia@muchich.org

Here in Walberton, we will be raising money for AFIA at the Mothers' Union table at the Village Show on July 4th. Please come and support us.

Scilla Page


Summer Bride

See, the summer comes
whetted sharp with light;
the sun grows bold,
thrusting into corners that were old
all winter:

tales then were spun untold
that are golden now,
and the stream too, once stopped with ice,
runs clear and white and laced with foam,
like a bride's dress trailing verdant grass
o'erhung by blossoms spun like veils,
and the blues and pinks of meadow flowers
crowded at her feet.

William Foot





ClearEdge
Exteriors

Anthony 07824158290
info@ClearEdgeExteriors.co.uk

Brickwork
Patios/ Driveways
Gutters
Fencing

- Building
- Repairs
- Cleaning
- Maintenance

ALL EXTERIOR WORKS

NEW
SEA HORSE SWIM SCHOOL

STARTING JAN 11TH 2026
AVISFORD PARK HOTEL & SPA
YAPTON LANE, BN18 0LS



½ HOUR LESSONS DELIVERED BY AN
ASA/STA TUTOR AND TWO HELPERS
CHILDREN FROM 3 YEARS UP
ONLY 5/6 CHILDREN IN A CLASS

*Over 30 years teaching swimming with Level 2 teachers
and helpers teaching over 200 children per week*

Contact: goldfinchplace@gmail.com
FOR MORE INFORMATION AND A REGISTRATION FORM

We clean ovens... so you don't have to

We're Ovenu and we can restore your oven and other cooking appliances back to their sparkling best!

- Non-caustic, odour free, eco-friendly cleaning products
- Punctual, courteous, professional service
- Rated five-stars by clients
- AGA and Range specialists
- Fully insured

Contact Steve,
your local
Ovenu
technician

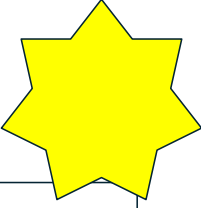


Call today on
01903 442 443
or scan to visit
our website




Appropriate baby names

Lawyer's daughter: Sue
Thief's son: Rob
Lawyer's son: Will
Fisherman's daughter: Annette
Meteorologist's daughter: Haley
Steam shovel operator's son: Doug
Hairdresser's son: Bob

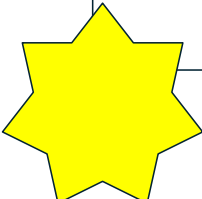
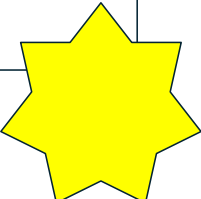
Walberton Players Youth Theatre

Coming up!

Summer work shops:
15th Aug 10.15am – 11.45am
23rd Aug 13.45pm – 15.15pm

Christmas show:
14th and 15th Nov. TBC

If your child would like to join any of
these contact Claire on
07903634822



WALBERTON VILLAGE HALL

Hi All,

I would like to introduce you to two new regular hires that have joined the

Village Hall this month.

Firstly a group called Hartbeeps West Sussex. These sessions are every Wednesday morning in the large hall, they are interactive, multi-sensory music based classes for newborn-5 years. If you would like to find out more or book a session feel free to use the links on our website or contact Caroline **Caroline.m@hartbeeps.com**

Also joining us is a new exercise class on Wednesday evenings in the small hall 6-7pm, this is a Boxing fitness class run by Jade from Sweaty Buddha Fitness. Jade is local to Walberton and welcomes any new people who would like to join in. Again her classes are accessible on our website with further information and links to book alternatively contact Jade directly **sweatybuddhafitness.com**

The committee is hosting a flower arrangement and cream tea in the large hall July 25th 12-2.30pm. Joined by our Florist Caroline who will inspire your creations and guide you into making your very own flower arrangement, followed by a catch-up and cream tea. This is a fundraising event for the Village Hall with any funds raised going directly to continued improvements to the hall.

Tickets are limited and available via Ticket Source only, You will find all links to book on our website or Facebook page. Local posters also have further details.

We are still looking for a volunteer to join our small friendly committee, somebody with 4/5 hours spare a month to act as our treasurer. You do not necessarily need an accounting background, just have an eye for detail and be good with numbers. Could this be you? Would you like to get involved? Please reach out to me, we would be very glad to hear from you.

manager@walbertonvillagehall.org

Penny

Dates for your diary

- Saturday 4th July Summer Fete and Garden Show
- Saturday 25th July Cream Tea and flower arranging
- Saturday 1st August our annual Music Night
- Sunday 1st November our annual Fireworks Night



WALBERTON NEIGHBOURHOOD WATCH

I am writing this report on a morning of rain and wind outside, after one of the hottest weeks for May on

record! How changeable is the British weather from one week to another! It does concern us a little however as we are opening our garden in two weeks time and obviously we would like it to be pristine. By the time you read this, the event will all be over and I'm sure the gardens will all have looked beautiful!

This is my last report for two months and there is very little to say concerning any criminal activity in our villages. We are so lucky (keeping our fingers crossed) as villages around us do have crime on a regular basis so we must be doing something right!

Report Fraud has issued a warning to online shoppers after a spike in criminals gaining unauthorised access to retailer accounts. They are urging shoppers to stay alert for unusual activity on their accounts following a rise in criminals gaining access to buy expensive goods, Recent reporting highlights Argos as a key target for theft but there are many other brands that are affected too. Criminals are using login details obtained from data breaches to gain unauthorised access to retailer accounts. This is possibly due to the practice which many of us share, of reusing the same password across multiple online accounts. Once they have control of the account, criminals will place online orders and then collect the goods in-person at a nearby store. These fraudulent orders are frequently fulfilled through 'click and collect' allowing offenders to retrieve goods in person. In May, Report Fraud received 652 reports which mention Argos, a staggering 323% increase compared to April when they received 154 reports. Since the start of 2026, there have been 1175 reports. Report Fraud says that if you decide to create an account for the store you're buying from, don't allow them to store your bank details for future purchases and use a new password. If you have been a victim of fraud, you should inform Report Fraud by reporting it on the website at **www.reportfraud.police.uk** or by calling 0300 123 2040.

Police have warned against rogue traders often targeting vulnerable people, such as older residents or those living alone. They go from door to door offering services like roofing, driveway repairs or gardening, often claiming urgent work is required and using pressure to secure a quick agreement and large upfront payments. This work is often poor, incomplete or unnecessary. Please don't be fooled by these people who unfortunately can be quite intimidating and say that you will get your regular maintenance person to look at the problem. If they still persist, close the door on them and phone the police.

Finally calling all walkers or dog walkers! Would you like to join the West Sussex Fire & Rescue Service Wildfire Prevention Patrol to help safeguard our countryside from the increasing risk of wildfires? Please get in touch to find out how to get involved by email: **frs.cptf@westsussex.gov.uk** or phone: 0330 222 8655.

Laurie King

REGULAR EVENTS Friday - Outreach Post Office 9.00am [p.23]
Coffee Stop 10.30am [p.23]

DIARY FOR JULY AND AUGUST

Jul 2	10.30am	Snowdrop Coffee Morning
Jul 4	1.30pm	Summer Flower Show (P.13)
Jul 4	2.00pm	Downland Art Society (P.27)
Jul 5	10.30am	Charity Cricket Match (P.40)
Jul 10	7.30pm	Chantry Quire Concert (P.30)
Jul 15	2.00pm	Wednesday Afternoon Club (P.2)
Jul 16	10.00am	'Little Lambs' pre-schoolers and carers (P.23)
Jul 25	12.00pm	Flowers and Cream Tea (P.36)
Aug 1	TBC	Annual Music Night (P.20)
Aug 1	7.00pm	An Evening with Robin Cousins (P.34)
Aug 15	10.15am	Walberton Youth Theatre Workshop (P.19)
Aug 15	12-5pm	Walberton History Group Event (P.8)
Aug 21	TBC	Gardeners Club Members cream tea (P.15)
Aug 23	13.45pm	Walberton Youth Theatre Workshop (P.19)
Aug 22-28	9.30am	Downland Art Society Exhibition (P.27)

FUTURE EVENTS

Sep 19	TBC	Walberton Gardeners Autumn Flower Show (P.14)
Sep 26	6.30pm	St Mary's Harvest Supper (P.9)

COMMUNITY MINIBUS SERVICE FOR JUL AND AUG

Thu 2 nd	Jul	Findon Garden Centre & Cafe
Thu 9 th	Jul	No Service
Thu 16 th	Jul	Littlehampton Centre and Mewsbrook Park & Cafe
Thu 23 rd	Jul	Sainsburys
Thu 6 th	Aug	Waitrose Chichester
Thu 13 th	Aug	Emsworth
Thu 20 th	Aug	Lunch - TBC
Thu 27 th	Aug	Sainsburys



Friendly Door to Door escorted service :

Please call Mary Lewis 07946 523969 for bookings and enquiries

SAINSBURY'S FREE BUS SERVICE FOR JUL AND AUG EVERY TUESDAY AND THURSDAY

Departs: Walberton bus stop, Maple Parade at 09:56am

Arrives: at Sainsbury's Rustington 10.31am

Departs: from Sainsbury's Rustington: 12.00 noon

NOTICEBOARD

FRIDAY COFFEE STOP

Do come and join others at the pavilion for coffee and biscuits from **10.30am to 12.00 noon**.

For more information please contact Jean Strickland 07966734298 or 01243 552825.

St Mary's Church Open

Both St Mary's Walberton and Binsted will be open during daylight hours till Oct.

Little Lambs

If you have pre-school children, why not come along to our 'Little Lambs'; with toys, songs and crafts. A great opportunity to chat and meet others. **St.Mary's Walberton Thursday July 16 at 10.00am**

Walberton Place Coffee Morning

A coffee morning is being held every **Thursday** at Walberton Place Nursing Home, from 10.30am. All visitors are warmly welcomed.

St Mary's online Prayer meeting

Every Tuesday morning from 8.15am, via Zoom.

(Please ask Tim for the details)

OUTREACH POST OFFICE

Don't forget that the **Outreach Post Office** is open every Friday from 9.00am to 12.00 midday. All the usual Post Office services are available. **Please support** Tracy as she provides this invaluable service to our community. Greetings cards also available.

(Held in the Pavilion)

The Binsted Bugle



What's Happening at the Glamping Site in Binsted?

Locals were happy with the original submission - a small-scale, low-impact rural glamping development providing holiday accommodation within a countryside setting, designed to sit comfortably within the landscape and offer a quiet nature-based tourism experience. But what has been built is quite different, much more urban, and caused a lot of frustration that the principles of the planning system could be so disregarded..

The owners of the glamping site have submitted a new planning application to seek approval for a number of changes to the design made after the original permission was granted since withdrawn due to the numerous objections that it was simply just regularising un-permitted development.

Arun District Council has confirmed the site is not what was approved and is in discussion with the owners.

The changes include outdoor cinemas and seating areas, extra bedrooms and storage buildings, fencing around each plot, a larger parking area, additional lighting, a large storage container and other additions around the site like non-native planting. Further changes to each of the six pods include wood-fired stoves, hot-tubs, saunas and, of course, fire pits.

What would have been a quaint addition to Binsted has instead become an urban complex of huts and cars, noise, light and smoke. The smoke from the 24 wood fires associated with hot tubs, heating and guest facilities have already caused complaints from residents and the owners of the adjacent Black Horse pub. There are also concerns about the impact on the surrounding countryside as the site has many lights that appear to stay on throughout the night affecting the dark skies and rural character of the area.

Further questions have also been raised about what happens to the water from the hot tubs when they are emptied. The site drains towards the Binsted Rife, which is connected to a network of internationally rare chalk-fed streams reputed to contain brown trout. Residents have asked for reassurance that chemicals used in the hot tubs cannot find their way into local watercourses.

The Council has confirmed that the owners were warned that making changes beyond the approved plans was done at their own risk. However, the site is allowed to continue operating while discussions continue and while the, yet to be submitted, application is being considered.

What concerns many people in the parish is whether the original vision for the site will ultimately be upheld, or whether the

development that has already been built will simply be accepted as the new reality. Local residents who wish to comment on the breach can still submit their views by email to planning@arun.gov.uk referencing WA/21/25/PL.
Sandra Cooke

(Happy days at past Binsted 'Strawberry Fair's'.)





VOLUNTEERS NEEDED
West Sussex Community Minibus

Could you spare **just 4 hours a month on a Thursday afternoon?**
We are looking for **Volunteer Drivers and Escorts** to help support our **Community Minibus Service** in our local area. Training will be given and for drivers under 70, a standard driving licence is all that is needed.

This important service provides door to door **shopping and social trips** for members of our community who may otherwise struggle to get out and stay connected.

- Your time could help someone:
- ✓ Get their weekly shopping
 - ✓ Enjoy a social outing
 - ✓ Stay connected with their community

Even a **few hours a month** can make a **big difference.** ❤️

HOW CAN WE HELP?

For July and August St Mary's is praying especially for:

July - Residents of Yapton Lane and Lake Lane and for local businesses based there.

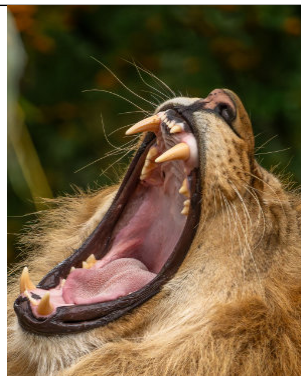
August - Residents of Bilborough Lane, Connemara Crescent and Steeplechase Way and for an increasing sense of community in Fontwell Meadows.

If you would like prayer for any needs you might have phone Jean Strickland (552825) or email houseofprayer@stmaryswalberton.org.uk

Trivia Question of the Month ;

Which animal is known to have the most powerful bite in the world?

(Answer on P. 58)



SATURDAY 4TH JULY 2 - 4PM

Steve Carroll will be giving the society a demonstration of paintings using textures in acrylics.

Steve started life as a graphic artist and has gravitated to Art History and painting. He has awards for his paintings and teaches art, art history and lectures at local societies.

PLEASE NOTE: The location for this demo only, has changed to:

Fontwell Community Centre, Fontwell Meadows, Fontwell BN18 0YF

If you are interested in joining Steve's workshop on the following Wednesday, please email Liz.

SUMMER EXHIBITION 2026 The Norfolk Centre, Arundel, BN18 9PA
Saturday 22nd August to and including Friday 28th August. 9.30 till 5.30 daily (5pm on the last day) more information of 2026 events, see our website, or contact Liz.

Liz Brown

pjbrown294@btinternet.com (www.downland.org)

(All DAS meetings are held in Walberton pavilion).

Flower Rota for St.Mary's Walberton

July

- 3rd Mo and Dianna
- 10th Mo and Dianna
- 17th Janette and Sue
- 24th Janette and Sue
- 31st Christine and Kate

August

- 7th Christine and Kate
- 14th Pauline and Elizabeth
- 21st Christine and Elizabeth
- 28th Diana and Christine

Pauline Blumer

Hartbeeps comes to Walberton Village Hall

I'm Caroline, owner of Hartbeeps West Sussex. My team and I are delighted to be bringing the magic of Hartbeeps to Walberton and look forward to welcoming families from the village and surrounding areas to these exciting new classes.



Hartbeeps is an award-winning programme of musical and sensory adventures for babies, toddlers and preschoolers which my team and I have been delivering across the county for 11 years. Every session is filled with original music, imaginative storytelling, colourful props and plenty of opportunities for little ones to explore, play and have fun. More importantly, it offers a chance for parents, grandparents and carers to spend quality time together and connect with other local families. Village halls have always been at the heart of community life, and I am thrilled to be adding something special for Walberton's youngest residents. Whether you're a first-time parent looking to meet others, a grandparent seeking a fun activity with your grandchild, or simply searching for a welcoming and engaging experience for your little one, Hartbeeps offers a friendly environment where everyone is encouraged to join in.

Classes are suitable from birth right through to preschool age, with activities carefully designed to support development while creating magical moments that children remember and parents treasure. There is no pressure to get everything right, just come along, sing, laugh, and enjoy the adventure together.

I would love to welcome you to Walberton Village Hall, and invite you to come and experience the Hartbeeps magic for yourself. We can't wait to meet you all. After all, the best communities are built together, and they are even better with music, giggles and a few bubbles!

Hartbeeps is running at Walberton Village Hall every Wednesday at the following times:

- 10am Happy House - for toddlers/preschoolers and their younger siblings
- 11am Baby Beeps – for babies from sitting unsupported to toddling
- 12pm Baby Bells – for babies from newborn to sitting. FREE for babies under 8 weeks

You can find Hartbeeps West Sussex on Facebook and Instagram and all spaces can be booked here www.hartbeeps.com/west-sussex/classes

Caroline

No quibble guarantee

Not that I speak from want, for I have learned to be content in whatever circumstances I am. I know how to get along with humble means, and I also know how to live in prosperity; in any and every circumstance I have learned the secret of ...both of having abundance and suffering need. I can do all things through Him who strengthens me. (Philippians 4:11-13)

For the love of money is a root of all sorts of evil, and some by longing for it have wandered away from the faith and pierced themselves with many griefs. (1 Timothy 6:10)



Recently a man received two letters from his bank. One was telling him his debt was going to be passed to the enforcement department, and the other was offering him a new loan! Sensibly, he got some advice about what to do. If you are thinking of getting a loan or a credit card, do check the small print. Does the offer seem too good to be true? What are the charges if you miss a payment? Make sure you know before you sign!

Many experts wonder if cash will become a thing of the past, because we use credit and debit cards so often, even for small payments. Credit cards and bank cards have their advantages. They are simple and easy to use. If you buy something on a credit card that costs more than £100 you get extra legal rights. So, if it does not arrive or does not work you can claim against the credit card company. But don't forget that debit cards are not credit cards and you do not get the same rights.

Up until a few years back we had offers of credit cards, loans, and buy-now-pay-later deals, all the time. Now things are tighter, and debt is a big worry for many. The Bible warns us of the dangers of borrowing but offers us the assurance that God cares for us. No questions asked!

David Pickup

Director: Peter Allwood
Pianist: James Sherlock

Chantry Quire

Registered Charity no: 1189177

making music

Choral Postcards

A selection of songs from near and far

Champs Hill

Waltham Park Road, Pulborough RH20 1LY
Friday 10th July at 7:30pm
Picnics in the garden from 5pm
Tickets £20

by kind permission of the Bowerman Charitable Trust






BS:7671 Qualified - Over 30 years Experience - Free Quotes - Fully Insured
Fault Finding - Re Wires - Consumer Units - Home Automation - Networks
Audio/Visual Systems - CCTV

0773 8686510
01243 828346
info@spec-electrical.co.uk





Seamstress Services

Professional Sewing Services

If you are in need of a skilled and experienced seamstress for repairs, alterations, or other sewing tasks, assistance is available. All work is undertaken with care and attention to detail.

Contact Information

For further enquiries or to arrange a service, please contact Sandra on 07546 224661.



BANKS

Plumbing & Heating

For All Your Plumbing Needs

01243 553483
07885 231823

- Bathroom & Kitchen Installation
- Complete Heating Systems
- Boiler Breakdowns, Replacement & Servicing
- Power Flushing

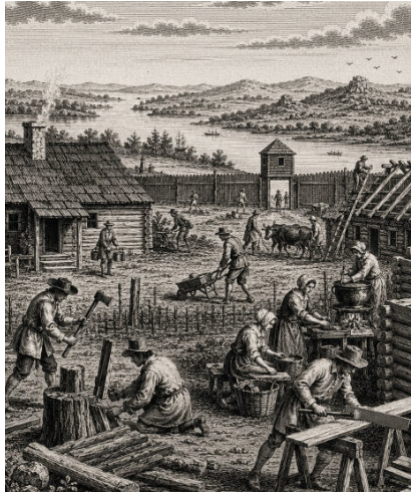
BOOKS YOU MAY ENJOY

Child of These Tears

By Molly McNett



I have never read a novel quite like this before. It is written in polyphonic form with (mainly) a quartet of characters, revealing life-changing events in a family of English settlers in the hamlet of Hartfield Falls, Massachusetts, in the early 1700s. McNett does an incredible job with format and language, easily transporting the reader into the age, scenes and the temperament of the characters she depicts. I say 'easily' in the sense it is a convincing narrative but I confess I grappled with it initially – much as an eleven year old might grapple with Shakespeare.



The dramatic story opens with a short letter from one John Baker to 'His Majesty's Governor for the Province of Massachusetts Bay in the English America'. It pleads for exemption from the Country Rates and requests a number of 'musketeers' and guard dogs as protection from the enemy, following a fearsome raid by a group of Indians, working for their French allies.

Life was tough for these early settlers, even without the ever-present threats posed by the proximity of the French and the native 'savages'. It is from John's wife, Sarah, we learn that in the early hours one February day, their hamlet was savagely attacked. Their small community was decimated with indiscriminate tomahawking and mutilation, including their 7 year-old son and 8 month-old baby. Ignorant of John's fate, both Sarah and their 8 year-old daughter, Constance, were brutalised, bound and forcibly marched away.

There follows a series of cameos written in quite different genres, reflecting the individual experiences of our 'quartet'. Through captivity tale, we share the ordeals of Sarah and Constance on their punishing journey northwards to Canada, in treacherous conditions. They barely survive. On arrival, they are cruelly separated, Sarah being sold off to a Frenchman and taken to Kebek while Constance is kept by the Mohawks as one of theirs. Here, she struggles with a very different culture, an incomprehensible language and sensitivities far removed from her early upbringing; but in time, she would pick up threads of their way of life, whilst also discovering skills which were familiar and which must have been learned during her former life.

Through his commonplace book, we keep in touch with John who, incredibly, escaped death. In his desolation, he is busily effecting repairs in Hartfield Falls against further invasion, and compiling a list of what has been plundered. Desperate for news of his wife and daughter, he is much taken with studying his books. A small library, belonging to their Calvinist preacher, had miraculously remained untouched when his house had burnt to the ground. As the preacher had not survived, John had taken the books for safe-keeping. They feed his appetite for learning and provide solace and comfort, for which he thanks God.

He is overjoyed when he eventually learns Sarah is alive and that Constance lives with the natives, prompting him to redeem his wife from his own purse and write to the Honoured Court of the Province for the expenses necessary to pursue his daughter's captors and provide the ransom to release her.

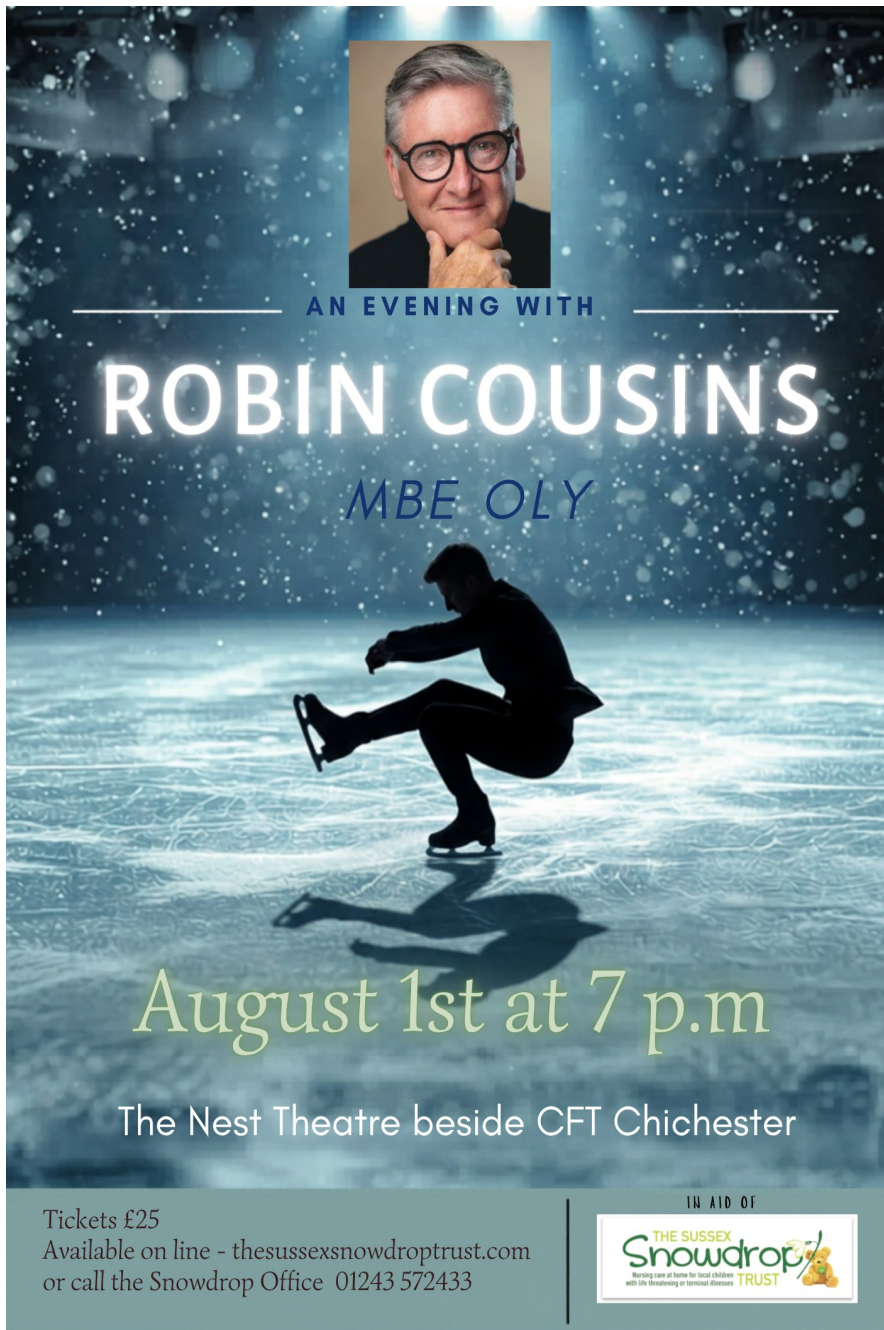
Interspersed with this, we hear from our fourth major player. Fr Simon Rene Floquart is a Jesuit, working as a French missionary with the 'savages'. From his letters, confessions and journal in time, we come to know how aware he is of his personal failings (for which he reprimands himself) and how he frets at his own inadequacies. He flounders at English and often cannot grasp the language of the natives. They frequently ridicule him. It is with some reluctance that he takes on the challenge of Constance's spiritual direction once she is adopted into their tribe. Often questioning himself, internal monologues divulge just how thoughtful, and very human, this man of God is. Gentle and caring, he sympathises with his English charge and longs to welcome her into his fold and save her soul, but she resists integration, mindful of her mother's strict instruction never to speak words in Latin, since it is the language of the devil.

When, after some sixteen months, a trader arrives to negotiate her release, the now nine year-old Constance has to decide with whom she truly belongs.

'Child of these Tears' is a book I shall long remember - for McNett's remarkable prose and the way her voices pierce one's very being in the telling of this tale. Modelled on the real life story of Eunice Williams in 1704, it is a vivid expose of clashing cultures, language and faiths, exploring the essence of 'home' and the sense of belonging. There are moments of quiet humour and tenderness but, for me, it is the stoicism and resilience of these people, their abiding trust in God's will and the conviction that he will grant them the strength to endure whatever comes, which lingers.

Anne Brearley-Smith

(Eunice's real story is documented in 'The Unredeemed Captive' by John Demos)



AN EVENING WITH

ROBIN COUSINS


MBE OLY

August 1st at 7 p.m

The Nest Theatre beside CFT Chichester

Tickets £25
Available on line - thesussexsnowdroptrust.com
or call the Snowdrop Office 01243 572433

IN AID OF



New Bank Note Range For British Wildlife

The Bank of England have announced a new range of notes that will depict iconic British wildlife.

The Wildlife Trust are hosting a vote on their website for you to pick the animals from a list, so get voting!

Votes are now open on new wildlife banknotes, which highlight conservation efforts across the UK.

Katy Bell, Bank of England wildlife panellist and senior conservation officer at Ulster Wildlife, says: "From marine, river and woodland nature to familiar farmland and urban wildlife, we're delighted that the shortlist features a number of much-loved species from across the UK. It was a tall order deciding on which species to include, but it's incredibly heartening to know that the public wish to see nature feature on our bank notes for years to come.



Wildlife options range from Mammals, Birds, Amphibians, Insects and Fish.

You never know, you may see your choices on a bank note in your pocket soon!

Our thanks to The Wildlife Trust for this article and voting is available on their

website <https://www.wildlifetrusts.org/>



Flower Arrangement Class *And Afternoon Tea*

Join Caroline at Walberton Village Hall for a lesson in flower arranging with tea and cakes included with your ticket!

£25pp



 Saturday 25th July
 12pm-2.30pm
 Walberton Village Hall

 Craft, Cakes And a Catch up!

 With Caroline

Tickets are available at  <https://www.ticketsource.com/>



We can all help towards the education of marginalised children in Eastern Europe

In a similar way to the shoebox appeal at Christmas, this summer we're filling bags with stationery, pens, pencils, rulers, etc.

- | | |
|---|---|
| <input type="checkbox"/> Exercise Books A5 (one with lines and one without) | <input type="checkbox"/> Glue - Solid or Liquid |
| <input type="checkbox"/> Drawing Pad A4 | <input type="checkbox"/> Ruler - Eraser - Pencil Case |
| <input type="checkbox"/> Pack of Plain Pencils + Sharpener | <input type="checkbox"/> Slim A4 Plastic Folders (NOT Ringbinder) |
| <input type="checkbox"/> Biro Pens - Blue and Black | <input type="checkbox"/> Plastic Water Bottle |
| <input type="checkbox"/> Set of Crayons | |
| <input type="checkbox"/> Set of Coloured Pencils | OPTIONAL EXTRA ITEMS |
| <input type="checkbox"/> Scissors (child friendly) and Sellotape | <input type="checkbox"/> Soap/Flannel |
| | <input type="checkbox"/> Toothbrush/Toothpaste |

Fill a bag, donate individual items, or make a financial contribution



Co-ordinator - Liz Walby
 email: lizwalby@icloud.com
 tel: 07961 818342

A school child in Eastern Europe has a long list of stationery and educational items that need to be purchased. The schools don't have any 'extras' to give the poorer children, so often these children drop out of the system. **BAGS of EDUCATION** provide what is needed to keep these children in school, which has the potential to transform their lives.



Walberton Parish Council - Annual Parish Meeting 2026 – An evening for volunteers!

The Annual Parish meeting was held in Fontwell Community Centre this year and commenced with light refreshments.

There was a fairly good turnout of both councillors and residents from all ends of the Parish which enabled lively discussion on various subjects.

The chairman of the Parish Council, Douglas McElvogue, gave a report on the Parish Council's activities for the last year, describing projects ranging from the Avisford Grange tennis courts being transferred to the Parish Council, to allotments, noticeboards, a goal facility and the redecoration of the Pavilion. Projects for the coming year consist of the cycle path improvements between the current cycle path and Fontwell Meadows, reinstalling the Bus shelters, transferring the final assets at Fontwell and the continued delivery of the grounds maintenance plan. The Chairman also thanked the Council's volunteers especially the Speed Watch Team for their continued help and support and Patrick and Bill for the installation of the "tommies" and the poppies.

Various organisations within the Parish were invited to give presentations:

The local organiser for the Poppy Appeal in Walberton, Binsted and Fontwell explained why he volunteered to take on the role of local organiser, why he still sells Poppies and volunteers are required to sell poppies in October and November.

A trustee from Walberton Village Hall thanked the Parish Council for their support for the past year, briefed the meeting on the Village Hall's activities and reminded everyone of the Village Hall's AGM the following week, with a request for volunteers, especially for Bonfire night.

A volunteer from the West Sussex Community Minibus Association explained the local service and that for Walberton, Binsted and Fontwell, they have the community minibus every Thursday afternoon. It is a door-to-door service, and they are currently looking for additional drivers and passenger escorts.

A volunteer from the Speed Watch Team explained what SID (Speed indicator device) is, how it works and what the Team do.

A member from Walberton Gardener's Club's informed the meeting of their flower shows, dog show, village fete and open gardens and

thanked the Parish Council for their support.

There was an update from the local PSCO, which included the news that a new colleague is to join the Fontwell division, an update on E bikes and a reminder of the 'drop in' sessions on Friday mornings at the Coffee Stop (in the Pavilion), if people wanted to discuss a matter.

After the presentations, there was general discussion on various subjects including, trees around Walberton playing field, bus shelters, Fontwell Meadows, where the next meeting is to be held and after some healthy debate on 'communication from the Parish Council', four volunteers stepped forward to set up/reinstate the 'Neighbourhood News'.

The meeting drew to a close with a thank-you to the Chairman for taking on the role.

If anyone would like to volunteer for any of the above, please contact the Parish Clerk on clerk@walberton-pc.gov.uk.

Shona

OUR POST BOX REVISITED.....

Since January, when I wrote of my frustrating experience of trying to post a parcel in the post-box on the Parade as we are encouraged to do, I have been pressing the button in a desultory way as I pass from time to time, hoping to see signs of life.



Until recently, there were none, and I have (unsurprisingly) had no communication whatsoever from Royal Mail to my e-mail of January or my reminder of February - though each was acknowledged with a reference many digits long. However, recently I found that the button, when pressed, comes up with a fetching green circle of light - see above - which presumably tells us that the scanner is active.

Is anyone able to confirm that they have used it successfully? If so, do please let the Editor know on parishnews@stmaryswalberton.org.uk **Edward Martineau**

ARUNDEL CASTLE CRICKET CLUB

BATTLE OF THE VILLAGE TEAMS

FERNHURST
ALDWICK
ARUNDEL
GRASSHOPPERS
MADEHURST



SUNDAY, JULY 5TH

LIVE MUSIC • REFRESHMENTS • RAFFLE

SPONSORED BY

MONAN GOZZETT LLP SOLICITORS
SUPPORTING THE SUSSEX SNOWDROP TRUST



Our family, caring for yours

Walberton Place Care Home

Our care is the kind we'd want all our loved ones to receive. Walberton Place Care Home provides the highest standards of family-led residential and dementia care. Our home is luxurious and beautifully furnished, whilst retaining a warm family atmosphere that makes Walberton Place feel extra special. Our facilities are luxurious and modern, offering residents a safe, clean and secure environment to live, safely and as they choose.

- Warm inclusive family atmosphere
- Person centred dementia care
- Meaningful activities
- Spacious en-suite bedrooms
- Café, pub, cinema & hair salon
- Daily fine dining



01243 551 549



Yapton Lane, Walberton, Arundel,
West Sussex, BN18 0AS



www.countrycourtcare.com



PRAYER DIARY FOR JULY

... those who hope in the Lord will renew their strength. They will soar on wings like eagles; they will run and not grow weary, they will walk and not be faint. Isaiah 40 v 31

St Mary's

Pray for the those attending New Wine and other camps over the summer months. May they be encouraged in their faith and refreshed through their time away.

Pray for couples preparing for their wedding day over the summer and ask for God's blessing on their married life together.

Our Community

This month we are praying for the residents of Yapton Lane and Lake Lane and for local businesses based there.

Pray for continued support for the Village Shopkeepers, and for the outreach Post Office on Friday mornings.

Pray for those who are carers for members of their family, for strength, patience and outside support for all that they do.

Our Nation

Pray for school leavers that opportunities would open up for them in further education, training or employment. Pray for parents supporting young people through this time.

Pray for calm in neighbourhoods which have experienced unrest on racial grounds and for all working to foster good relations between communities.

The World

As the USA celebrates its 250th anniversary of independence pray for wisdom for its leadership, for Senate and Congress, also for direction in its relations with other countries.

Pray for a lasting ceasefire between Israel and its neighbours; pray for humanitarian aid to reach those in Gaza who still lack basic food, water and medical supplies.

The Church

12 July 2026, Sea Sunday: pray for seafarers and their families and give thanks for their lives and work. Pray for organisations who offer compassion, care and support to those living and working at sea.

Pray for those who will be ordained during this season and the parishes who will welcome them as deacons and priests.

PRAYER DIARY FOR AUGUST

Be joyful in hope, patient in affliction, faithful in prayer.

Romans 12 v 12

St Mary's

Pray for those who will visit to lead us in worship over the summer period.

Give thanks and pray for all who give their time to clean the church and maintain the churchyard.

Our Community

This month we are praying for the residents of Bilborough Lane, Connemara Crescent and Steeplechase Way and for an increasing sense of community in Fontwell Meadows.

Pray for headteachers and teaching staff for a restful break over the summer months and time to prepare for the new term.

Give thanks and pray for the activities of the Village Friends.

Our Nation

Pray for accountability and responsibility in the way AI is used in areas such as defence, healthcare and education.

Pray for families spending time together over the summer break and parents juggling work, childcare and finances.

Pray for young people receiving exam results and making decisions about the next step.

The World

Pray for families who lost loved ones in the recent earthquake in the Philippines and for communities rebuilding.

Pray for all those who have fled their homes due to persecution or conflict, for those who now live in refugee settlements. May they find caring support to be able to settle into permanent homes and find healing from trauma.

The Church

Pray for discernment and guidance for those responsible for selecting the next Bishop of Chichester. Pray for Bishop Ruth and Bishop Will during this interim period.

Pray for chaplains in hospital and hospice settings as they draw alongside those who are sick and their families.

NEWSPAPER EXTRACTS from 100 years ago

About 80 people attended a very successful whist drive, under the auspices of the Walberton & Binsted Women's Unionist Association, which was held in the grounds of Walberton House on July 14th by permission of Mrs Liddle. During the evening Miss Adams (of London) gave an address on life in Russia. *WSG 22 Jul*

CRICKET. On Saturday a match was played on the home ground between Walberton Club and the employees of Messrs A Booker & Son. The latter batted first, and were dismissed for 23 runs, the Club members replying with 48. G Booker, bowling for the builders, took six wickets for 15 runs. Against the attack of nine bowlers, the builders did better in the second innings, scoring 78 (L Westbrook 21 and C H Booker 17). *WSG 22 Jul*

THE ROADS REPORT. Helpful Information by Royal Automobile Club..... Bognor to Chichester, via Fontwell – Care required. Drayton to Goodwood – In Bad Condition. *P'mouth Eve News 1 Jul*

Our Successful Fete; £125 for School Extensions. *BRO 7 Jul*

Walberton Annual FLOWER SHOW will be held in the Vicarage Gardens (By permission of the Rev. W G Hunter) on Wednesday, August 4th. A Band will be in attendance. Teas and Refreshments.

Sports. Competitions. Dancing.

ADMISSION: 2.30 to 4pm 1/- after 4pm 6d. *Chi Obs 28 Jul*

Chichester High School. Scholarship Winners ...Muriel Staker, Walberton (Walberton & Binsted C.E.)

Another potato curiosity has been discovered here. Mr W Harfield found among the remains of last year's crop that had been stored in an outhouse, a large tuber half filled with young potatoes nearly as large as walnuts. It is hoped that Mr Harfield will "stage" the specimen as a non-competitive exhibit at the forthcoming flower show, since much may be learned from it as to what happens annually underground to provide our table with this useful vegetable.

WSG 22 Jul

PORTFIELD STABLES, CHICHESTER.
(About 1/2-mile from the Railway Station, on the Motor 'Bus Route.)

ANNUAL SALE OF HUNTERS, HACKS, HARNESS HORSES, & HEAVY & LIGHT DRAUGHTS, on return from Military Training. Messrs.

S T R I D E A N D S O N

are instructed by Messrs. T. Field and Son to CONDUOT this ANNUAL SALE at Portfield Stables, on TUESDAY, AUGUST 10th, 1926, comprising 60 HUNTERS, HACKS, & HARNESS HORSES.

HEAVY & LIGHT DRAUGHTS, (also several carriages and traps and a quantity of harness), direct from Military training with the 390th Battery Royal Artillery and the Middlesex Regiment, in Arundel Park and on the Fontwell Race-course.

These horses range from 5 to 8 years old, will be in hard condition fit for immediate use, and are well worth the attention of anyone requiring this class of animal.

They may be seen at the Camps from July 25 to August 7th by arrangement with the Vendors, or can be inspected and tried at the place of sale on Monday, August 9th, and on the Sale morning.

Sale to commence at 1.30. Catalogues may be obtained of Messrs. Tom Field and Son, Portfield Stables, Chichester ('Phone 17), and from the Auctioneers, 63, East Street, Chichester ('Phone 5).

P/mouth Eve News 30 Jul

Chi Obs 14 Jul.

Extracted by Harlequin

NEWSPAPER EXTRACTS from 100 years ago

YEOMANRY CAMP AT FONTWELL

The long enclosure at the back of Fontwell Park race-course near Balls Hut on the Chichester to Arundel Road, presents a very picturesque scene at the moment. Kindly lent by Mr Alfred Day and his co-directors, it is being occupied by a big camp of the 98th (Sussex & Surrey Yeomanry) Field Brigade R.A., which has been under canvas since July 25th. The total in camp is something over 250....Drill is being carried out daily in the mornings on the downs of Slindon, placed at the disposal of the brigade by Mr. F. Wootton Isaacson and Violet, Lady Beaumont, and the tenants of Gumber and Court Hill Farms. In the afternoon gun drill and other work takes place on the parade ground. *Chi Obs 4 Aug*

The Eastergate & district branch of the British Legion and the Walberton, Yapton & Westergate Troops of Scouts should benefit substantially from a fete and Scout rally which was held at Avisford Park (by the kindness of Mr Grinsted) on Saturday. The weather was excellent and people came in large numbers from all around to support the event..... Scouts Peach (Arundel), Edwards (Westergate) and Durham (Walberton) were winners in the obstacle race, and in the alarm race for Walberton's Own, the prizes went to Scouts T Willis, S Dumer, and C Willis. The programme also included 2 performances by the "Barnstormers" Dramatic Society; scenes from "A Midsummer Night's Dream", by the children of the Walberton & Binsted School; and dancing and a camp-fire concert in the evening. The band of the Littlehampton British legion Club was in attendance and there was a great array of sideshows.

P'mouth Eve News 16 Aug

Two sailors from Portsmouth Naval Barracks, S T Melhuish and Louis Stanisals, are lying in the Royal West Sussex Hospital, Chichester, suffering from injuries received in a collision with a motor-car while motor-cycling on Monday afternoon on the Arundel-Chichester road at the Royal Oak, Walberton. While the car was crossing the main road, the motor-cycle struck the off-side of the car, damaging the glass and upper woodwork. The sailors were hurt about the head and face, Melhuish's injuries being the more serious, and he was removed to Chichester in the motor ambulance. They are making good progress towards recovery. *WSG 26 Aug*

Westhampnett R.D. Council meeting.

Mr Short said his parish council applied six months ago for a 10 mile limit through Walberton village, and had not heard a word about it. The Chairman said there was very small chance of getting a 10 mile limit brought into force. The whole tendency at the present time was against such limits. Applications were opposed vigorously by the various motor-coach organisations, and the tendency was rather to do away with even a 20 mile limit than to create fresh ones. General Sir Geo Barker referred to the excessive speed of heavy commercial vehicles. Sir Geo. Said he was behind a heavy motor-lorry at Fishbourne, which was doing 25 miles on one occasion, and behind another on the Singleton Road that was doing 24 miles. *WSC 26 Aug*

Extracted by Harlequin

We're here for you

GWCA
SOLICITORS



Your first choice for legal services in Arundel

GWCA Solicitors provide legal services for individuals and businesses.

We have a range of experts ready to meet all your legal needs

- Residential property
- Commercial property & Business services
- Landlord and Tenant
- Probate
- Private Client
- Wills Lasting Powers of Attorney

If you would like more information about any of these services, contact us:

The Estate Office, London Road, Arundel, West Sussex, BN18 9AS

01903 881 122

www.gwca.co.uk



GWCA Solicitors is a trading name of Green Wright Chalton Annis who are authorised and regulated by the Solicitors Regulation Authority No 205902.

Old Newspaper Research

When I am researching the online newspaper archive for articles in this magazine, it is sometimes difficult to fill one page but occasionally there are many stories of interest, hence more recently two pages per issue. As you know our Summer publication is a double. July and August for 1926 offered a wide selection of articles, I therefore found it difficult to decide which to include. My key words for the search are always Binsted (Binstead, due to occasional mis-spelling), Fontwell and Walberton, extended to Avisford, Barnham, Slindon and/or Yapton when offerings are minimal.

The filming of these newspapers often means the articles are less than clear and I have to omit some which may have been of interest. One example was in the West Sussex Gazette (WSG) of 26th August. The article was in the right hand column on the left page ie on the fold and sadly a good deal of the text was illegible. I am still wondering what **Mr J. Hill, last week, gathered a xxx seven inches long and containing xxx** was referring to!

In the same column we have the story of **AN OLD HEN'S TRAGEDY**. The general opinion among poultry xxx that when a hen arrives at the age xxx or 5 years her life of usefulness xxx may not always be correct xxx horn kept by Miss Hunter, at Walberton xxx, was profitable till xxx tenth birthday. Her eggs have xxx the judges at several Walberton shows, and she has been honoured xxx prize awards on four occasions. Once xxx highly commended. For this year's xxx a selection was again made from her xxx summer batch of eggs, but she was xxx over in the judging. The xxx apparently too much, for a few days xxx wards this valuable food producer xxx her nest, and one morning was found xxx the gardener lifeless.

Finally, there was a report of **Dense clouds of smoke coming xxx Walberton-Barnham lane on xxx afternoon of last week showed that xxx was a blaze somewhere**. It transpired xxx boiling tar in the tar spraying xxx while work was in progress xxx allowed to come in contact with xxx. In addition to the tar-container xxx sprayed tar on the road got xxx the roadside hedge was burned xxx distance of about 40 yards. Many xxx of tar were destroyed, and the traffic xxx leading to the railway station xxx until the blaze was got under.

Luckily we can fill in the missing words and still get the gist of both the hen and fire stories, but that of Mr J. Hill may always remain a mystery!

I hope you enjoy reading the extracts which allow us a glimpse into village life a century ago. If you haven't seen Brian Allsopp's excellent book "Moments in Time" then please purchase a copy, it certainly brings our history "alive" with the wonderful photographs and information. Also, don't forget Belinda's "Walberton Future History" FaceBook page, for we are making history today.

Harlequin



SLINDON COLLEGE

Slindon College is an Independent Day and Boarding School providing a Specialist Learning Environment for boys aged 8-18. The College is set in the historic Slindon House located in the South Downs National Park.



Scan for Open Morning information



- High teacher to pupil ratio
- In-house therapists
- Flexi/Weekly/Termly Boarding
- Exceptional pastoral provision
- Visits welcome all year
- Specialist teachers



THE GOOD SCHOOLS GUIDE

Slindon House, Slindon, Arundel, West Sussex, BN18 0RH

01243 814320 • registrar@slindoncollege.co.uk

www.slindoncollege.co.uk

CReSTeD

MOT Servicing Diagnostics
Mechanical & electrical repair
4 Wheel computer wheel alignment
Air conditioning - R134a & R1234yf gas
Electric & hybrid vehicle diagnostic & repair

S&G Motor Centre

Not just your friendly independant Renault & Dacia specialist; we cater for all makes & models.

Arundel Road, Fontwell, West Sussex, BN18 0QP 01243 814564 sandgmr@yahoo.co.uk

inside OUT

Helpful home maintenance inside and out

- home improvements / maintenance
- fixing / renovating
- lawn mowing
- general maintenance

Give Mark a call: 07956324958
dr.roberts@hotmail.co.uk

I'm a very 'handy man' based in Walberton happy to help in the West Sussex area. Just ask.... anything considered.

Arun Community Transport

 Fundamentally Caring
ARUN COMMUNITY TRANSPORT

DO YOU HAVE A DRIVING LICENCE SPARE TIME YOUR OWN CAR

We are currently looking for volunteer drivers in the Arundel area to transport local clients to appointments.

IF YOU ARE INTERESTED IN VOLUNTEERING PLEASE CONTACT OUR OFFICE ON

01903 792110

REGISTERED CHARITY NUMBER - 1183665

Celebrating 50 Remarkable Years of Service

You may have seen our minibuses travelling through local villages, picking passengers up from their homes and whisking them off for enjoyable days out. All of which is made possible through the commitment of our volunteers.

The story of West Sussex Minibus began in the 1970s, when funding pressures led to a significant decline in rural public transport services. A determined group of residents stepped in, committed to helping their neighbours get to the shops each week so they could collect essential supplies and maintain their independence. In 1974, armed with a borrowed minibus and a great deal of community spirit, the first trial service left Pulborough and headed to the local shops.

The idea quickly proved its value. Before long, neighbouring villages began asking whether they could benefit from a similar service. A route from Fittleworth was soon established, using a shared ambulance as transport—something that seems almost unimaginable today.

Thanks to successful fundraising efforts and a generous donation from the Chanctonbury Lions Club, we purchased our first minibus in 1976, and West Sussex Minibus was officially born.

Over the decades, new village services have been introduced, our fleet has expanded, and countless journeys have been made. Remarkably, that original idea - to help people stay independent - remains just as relevant today as it was 50 years ago. However, we are much more than a transport provider. Our organisation is about helping people stay active and connected to their community. There is nothing better than seeing new friendships form on journeys, knowing every passenger by name, and witnessing the care and dedication shown by our volunteers.

Even during the challenges of the pandemic, when our transport services were temporarily paused, our volunteers continued to support our members by delivering shopping and providing practical help.

In 2016, this remarkable contribution was recognised nationally with The Queen's Award for Voluntary Service - a fitting tribute to the people who make everything possible.

As we celebrate 50 years of service, we celebrate the people behind it all. This story belongs to every volunteer, passenger and supporter who has played a part in helping our charity thrive.

As we look to the future, we invite you to become part of our next chapter. Please get in touch to find out more.

Call: 0300 772 7735 or see our website westsussexminibus.org.uk



HELEN'S
AIRPORT CARS LTD
01243 820 820
west sussex

To and from home:
AIRPORTS HOSPITALS
HOLIDAYS CRUISE SHIPS

We specialise in
long Distance Journeys

to and from all Mainland UK
destinations from the South coast.

f @HelensAirportCarsLtd v WhatsApp http://www.airportaxis.co.uk

When you use one of
our advertisers, do let
them know you saw
them in the Parish
News!



The Lay Training Programme was the envy of the diocese

The tyrant dies and his rule is over, the martyr dies and his rule begins. – **Soren Kierkegaard**



**WOODACRE
BED & BREAKFAST**

Arundel Road, Walberton
Arundel BN18 0QP

T: 01243 814301

M: 07799576294

A warm welcome awaits

Kevin & Sue welcome you to stay at Woodacre B&B. Set in a lovely large garden, providing a great base to explore Wesx Sussex.
2 Ground Floor Bedrooms plus 2 further Bedrooms on first floor if required.
Breakfast served in Conservatory overlooking garden.

www.woodacre.co.uk

Email: bookings@woodacre.co.uk

Elaine Sturgess

Holistic Health Ltd

Manual and Cranio-Sacral Therapy

Effective & Gentle Treatment for people of all ages including babies, children, pregnant women and the very elderly

- Headaches
- Stress
- Arthritic Pain
- Sciatica
- Back & Neck Problems
- Trapped nerves
- Sports injuries

01243 545200

www.elainesturgessholistichealth.co.uk

Laburnums, Hook Lane,

Aldingbourne, PO20 3TE



Walberton Village Store

Newspapers * Magazines * Confectionery
Lotto * Bakery * Groceries
House Coal * Smokeless Coal
BBQ Charcoal * Logs & Kindling
My Hermes Parcels * PayPoint
Beers & Wines * Greetings Cards
and much, much more

1 Maple Parade, Walberton

Tel: 01243 - 551414



**TREE PRUNING
TREE REMOVAL
HEDGE CUTTING
STUMP GRINDING
DEADWOOD
FELLING
CROWN REDUCTION
CROWN CLEAN/LIFT**

**WALBERTON BASED
07407 172 133
aston@kiwintree.co.uk**



PRH Garden Services

Friendly, reliable service. Fully insured.

Services include lawn cutting and care, hedge cutting, fence repairs, jet washing and all general garden maintenance.

Call Paul: 07772 563065 / 01243 587905 or

Email: prhgardenjobs@gmail.com

www.facebook.com/PRH-Garden-Services



Reflexions



Ladies' Health and Beauty Therapy Clinic

Indian Facial Rejuvenation, Reflexology, Indian Head Massage,
Thermo-Auricular Therapy (Hopi Ear Candling), Prescription Facial Treatments
(Organic & Vegan Skincare), Manicure, Pedicure, Waxing, Lash & Brow Tinting.
Gift Vouchers Available.

For more information or an appointment call Pam on Fontwell (01243) 814648

Ladies Only "Beauty on the outside comes from the inside" Local Authority Registered

D.M. Chainsaws Ltd & Murrell Garden Machinery

Sales, Service, Repairs, Hire.

Chainsaws, Lawnmowers, Garden Tractors, Strimmers etc.

Hedge Cutters, Hand tools & much more.

Walberton Place Farm at the junction of

The Street & Yaptan Lane, Walberton. Tel: 01243 553333 or 554065

THIS SPACE IS AVAILABLE FOR YOUR ADVERT

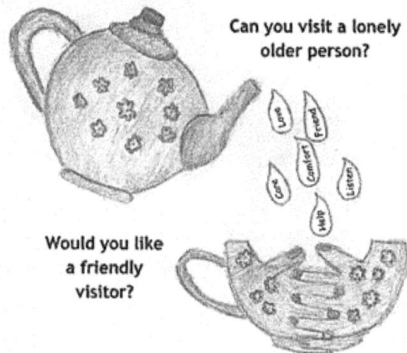
You can advertise here from £56 pa for a one-quarter page black and white 'inside page' advert.

For further details please contact the Editor

Details available on page 60

VILLAGE FRIENDS

Your local good neighbour scheme



Can you visit a lonely older person?

Would you like a friendly visitor?

We can help! Call us on
07925 217843

Village Friends
Charity Number 1095066

DESIGN BY JAMES DACE
ORAMSTON SIX VILLAGES ACADEMY



Ellis & Co PLUMBING

- General Plumbing & Heating
- Bathroom Design
- Oil Boiler/ Tank Specialist
- Thermal Stores/Unvented Systems
- C & G Qualified engineers
- Underfloor Heating installed
- Credit/Debit Cards Accepted
- 24hr Emergency Service

All aspects of plumbing undertaken
by your local firm in Westergate -
No Job Too Small!

01243 544678

Mob 07860 910979



We never forget you have
a choice!

Tree surgeons don't simply cut trees down. We consider the health of the tree and balance what is best for it with any Tree Preservation Orders and the needs of its owner before we make any recommendations. Apart from standard tree work such as removal, raising or lowering of the crown, pruning and branch removal, we offer several garden services. We are NPTC qualified (National Proficiency Tests Council) and have £2m public liability insurance. Like many tree surgeons we recycle most of our green waste locally at a specialist recycling plant. We are based just outside Arundel and have our own coppice woodland from where we supply firewood.

Find us on Facebook



ASHWOOD TREE SURGERY

All aspects of tree surgery

Stump removal

Hedge cutting

Fencing

Landscaping & Turfing

1½ & 3 ton mini digger hire

Logs

Free estimates and advice

Covering all of West Sussex

01903 723710

07714 165171



Oaklands Funeral Service

Your local Independent
Funeral Director in Chichester



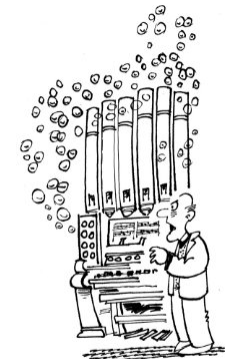
For the personal touches that matter
Offering funerals at affordable prices
Private Chapel of Rest
Pre paid Funeral Plans

David Murrell Photography

Call 01243 773114

(24 hours a day, 7 days a week)

4 The Ridgeway, Oliver Whitby Road,
Chichester, West Sussex PO19 3LA
Email: contact@oaklandsfuneralservice.com
www.oaklandsfuneralservice.co.uk



For the last time! - Which member of the Junior Choir
put bubble mixture in the organ-blower?!



KW Tree Care
Tree Surgeons
 Kevin Wymbs
 N.C.H.Arb

All Aspects of Tree Surgery / Hedging.
 Stump Grinding / Root Removal.
 Fruit Tree Care / Maintenance.
 Tree Reports, Consultation and Advice.

WSCC Approved and Fully Insured

Tel : 01243 814507

Mob : 077 909 033 55

Trivia Question of the month (Answer)

Which animal is known to have the most powerful bite in the world?

Answer: Crocodile

The Saltwater Crocodile is the animal with the strongest bite force recorded at 3,700



Funeral Service • Memorial Masons • Funeral Plans

- Independent family owned and run funeral service
- 24 hour personal service
- Private Chapel of rest at each office
- Home visits arranged for your convenience

For more information please contact:

43 Spitalfield Lane, Chichester, PO19 6SG Tel: 01243 773311
 27 - 31 High Street, Bognor Regis, PO21 1RR Tel: 01243 864745
www.reynoldsfunerals.co.uk

PARISH NEWS DEADLINE FOR THE SEPTEMBER ISSUE

MONDAY AUGUST 10

All contributions **must** be in by this date, any received after this may be held over until the next issue. Thank you for your co-operation.

Contributions for the **Parish News** may be submitted as follows:-

* **email:** parishnews@stmaryswalberton.org.uk

* **hard copy** by post to the Church Office for the attention of the editor

Church Office:- William Booker Yard, The Street, Walberton,

Arundel, BN18 0PF Tel. 01243 552792

(opposite Walberton & Binsted CE Primary School)

Office Hours:- Wednesday to Friday 9.00am-11:00am email:

walberton.stmarys@uwclub.net

Out of Office Hours:- Rev. Tim Ward, St. Mary's Vicarage,

The Street, Walberton,

Arundel, BN18 0PQ Tel. 01243 551488

SUBSCRIPTIONS

Free delivery in Walberton, Binsted and Fontwell

Annual subscription £12 pa (£20 by post if you live further afield)

Payment by BACS preferred

To receive a copy of the Parish News each month please first email

susanmart953@gmail.com (Tel: 01243 555778) to confirm how much is due.

Account name: Walberton PCC Sort Code 60.01.18 A/c No. 67502865

REFERENCE: PNews + Street or House name

OR

Fill in the form below and send with payment to:

The Church Office, Unit 4, William Booker Yard, The Street,

Walberton, BN18 0PF

Cheques payable to WALBERTON PCC

NAME

Address.....

Email address

Tel No

CONTACTS

All numbers start with 01243 unless otherwise stated

VICAR OF WALBERTON AND RECTOR OF BINSTED:

Rev. Tim Ward 551488

Church Office: (Wednesday to Friday 9.00am - 11.00am) 552792

e-mail: walberton.stmarys@uwclub.net

Office Administrator Ali Staker

ST. MARY'S WALBERTON

Parish Readers: Julie Allday 544615

Churchwardens:

Steven Phillips 828346

PCC Secretary: Julie Allday

PCC Minute Secretary:

PCC Treasurer and Gift Aid: Tom Evans 544672

Safeguarding Officer Mrs Katarzyna Nichols 551113

Bell Ringers: Colin Spencer 824952

Church Flowers List: Elizabeth Gammon 01903 882722

Pauline Blumer 945491

Mothers' Union: Mary Lewis 552292

2nd Thursday of the month, 2pm e-mail: lewismaryp@hotmail.com

ST MARY'S BINSTED

Churchwardens: Carolyn Coles 814608

Sandra Cooke 551493

PCC Secretary: Judith Walker 07713 156667

PCC Treasurer: Edward Martineau 07725 033763

PARISH NEWS:

Editorial and Advertising: Andy Harris and Sandra Cooke

e-mail:
parishnews@stmaryswalberton.org.uk

Distribution & Subscriptions: Susan Martineau 078 133 11 941

susanmart953@gmail.com

OTHER LOCAL CONTACTS

Walberton Baptist Church: Pastor Ray Brinkley 542388

Walberton Parish Council:

Chairman: Douglas McElvogue 554528

Clerk: Shona Turner 554528

e-mail: clerk@walberton-pc.gov.uk

Office opening hours: Tuesday & Thursday 9.00am to 12.30pm

CONTACTS

All numbers start with 01243 unless otherwise stated

Walberton Village Hall: Hall Manager: Penny Osborne-West
(For bookings and enquiries) e-mail manager@walbertonvillagehall.org

Fontwell Community Hall Hall Manager: Richard Riordan
richardriordan@walberton-pc.gov.uk

Neighbourhood Watch Walberton Co-ordinator:

Laurie King 551938/07710 521373

Village Friends: 07925 217843

Community Minibus Service: Mary Lewis 07946 523969/552292

Sue Young 07778 785273

Walberton, Binsted & West Barnham Support Fund:

Secretary: Vanessa Church 554872

Walberton & Binsted C of E School:

Head Teacher: Joe Neale 551398

PTA Chair Lisa Pena

PTA Co-chair: Charlotte Cook

PTA Secretary: Jenny Williams

Community Playcentre @ Walberton:

Chairman: Catherine Purdie 931848

info@communityplaycentre.org

Playcentre Manager: Kelly Townsend 931848

kelly.townsend@communityplaycentre.org

Walberton Toddler Group: Kelly Townsend 931848

CLUBS & SOCIETIES:

Downland Art Society: Campbell Askew
web site: www.downland.org

Five Village Society: Joanna Williams 551524

Walberton Allotments Association: Liesma Mezulis lzulis@btinternet.com

Walberton Cricket Club: Chairman: BJ Smith 07712 893155

Walberton Cub Scout Colony: Stuart Thorne 545424

The Art Society Boxgrove:

General Enquiries (Chair): Diana Windram 01243 551008

Membership: Elaine Clarke 555644

Walberton History Group:

Chairman: Vince Cooper 551544

Membership Secretary: Debbie Froggatt 542796

Walberton Gardener's Club: Liz Hewson - Chairman 07785 307487

Walberton Players:

Sandra Cooke - Chair

chair@walbertonplayers.org.uk

Junior players Claire Dorey 07903 634822

Wednesday Afternoon Club:

Secretary: Ann Wells 555893

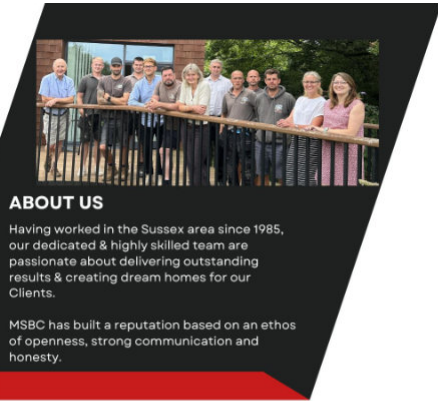
3rd Wednesday of the month 2.15pm



THE MARTIN SEWELL BUILDING COMPANY

Your vision, our expertise. Building your dream home, together

An Award Winning, Chartered Building Company



ABOUT US

Having worked in the Sussex area since 1985, our dedicated & highly skilled team are passionate about delivering outstanding results & creating dream homes for our Clients.

MSBC has built a reputation based on an ethos of openness, strong communication and honesty.

WHY CHOOSE US?

Experienced in delivering a wide range of high quality building projects, from bespoke new builds to the sensitive renovation of listed buildings or extensions and refurbishments for private & commercial premises.

CONTACT

01243 542 056 www.msbc.uk.com admin@msbc.uk.com

AWARDS



S.D.L. PROPERTY MAINTENANCE

- Checklist of services including UPVC Guttering, Fascias and Soffits, Painting and Decorating, Building Work, Cleaning of Conservatories, Patios and Driveways, Plastering, Patios Laid, Fencing, Renovation, and Groundworks.

Established for Over 30 Years

Fully Insured (£2 Million Public Liability)



Call Simon NOW on:

m: 07760 268 091 - t: 01243 605 612

For more information and testimonials please visit our website:

www.sdlbuildingservices.co.uk

Warren Vaughan PAINTING & DECORATING

For a Professional Decorating Service Free Quotations and Advice

Mobile - 07813 325838

Telephone - 01243 551595

Sefton, Manser Road Walberton, ARUNDEL West Sussex, BN18 0AW

AERIAL MAN

Big firm quality – Small firm prices

Digital TV&Radio * Satellite dishes * TV&Phone sockets

FreeView&FreeSat * TV/DVD setup * Aerial repairs * TV wall hanging RE-TUNES *

SkyHD & SkyQ * Free quotes * Insured & Guaranteed No call out charge * +30 yr

exp * Family run business



01243 545697 www.aerialman.com



Community Playcentre at Walberton

Encouraging confidence and individuality in each child



Located in the beautiful village of Walberton, we offer a full range of childcare for babies to children aged up to 12 years in our purpose-built premises with indoor and outdoor play space. Our team is made up of highly qualified and experienced practitioners who put our ethos behind everything we do.

We are open 7.30am until 6.00pm, 5 days a week, 51 weeks of the year.

We offer a range of nursery sessions including school days, full days, term time and all year. Early years funding accepted for eligible children.



Breakfast and afterschool sessions also available for children attending Walberton and Binsted C of E Primary school, and holiday club for children in Walberton and surrounding villages.

For more information or to book a show round please see our contact details below

www.communityplaycentre.org Info@communityplaycentre.org 01243 931848



Selling made simple.

At Sims Williams, we have been successfully selling property since 1981. We fully appreciate that selling your home can be both daunting and exciting at the same time.

We are here to guide you through every step of your journey, providing professional advice, support and guidance you can trust.

Move with confidence.

Sales | Lettings | Land | New Homes | Estate Management

ARUNDEL OFFICE
01903 885678
arundel@simswilliams.co.uk

CHICHESTER OFFICE
01243 787868
chichester@simswilliams.co.uk

BOGNOR REGIS OFFICE
01243 862626
bognor-regis@simswilliams.co.uk

WALBERTON OFFICE
01243 551368
walberton@simswilliams.co.uk

